

IMAGE SUBMISSION GUIDELINES

GILT CITY

IMAGE STANDARDS

Please submit a set of up to 20 images from which our design team will select 3-6 (please specify any special order for the images upfront). Sales may have more than 6 images if approved by the design team.

All images should be in full color, reflect the luxury Gilt City brand and should be cohesive in color, mood and style.

Images should be factual/accurate to the sales offering.

No logos, graphics, filters or text should be applied to imagery.

All images are subject to edits and approval by our design team.

IMAGE SPECIFICATIONS



Food & Drink: Plated food, wine/cocktails, bar/wine collection

Ticketed Events: Wide shot venue exteriors and interiors, celebrity performances/attendees, stage performances, and other game or event shots

Beauty & Medical: Focus on treatment stations, doctor/treatment specialist portrait, wide shots of exterior/interior (avoid hallways or waiting rooms)

Salon & Spa: Focus on customers receiving treatment/styling, style samples/look books, wide shot of studio and spa/salon stations (avoid hallways or waiting rooms)

Product, Retail & Service: Focus on demonstration of services offered, product imagery, wide shot of storefronts and interiors

Fitness: Wide shot interior with exercise machines/apparatus, demonstration of services offered, working out in classes or with a trainer

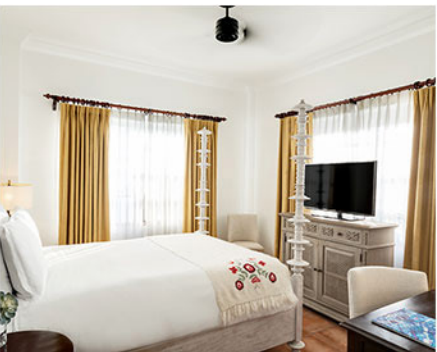
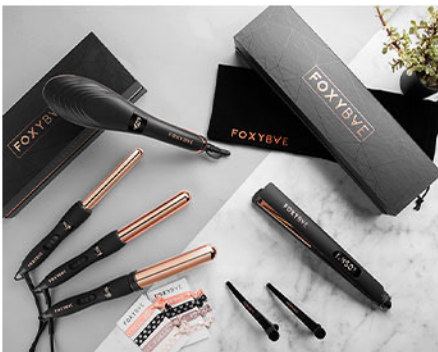
TECHNICAL SPECIFICATIONS

All images should be at least 500kb and at least 1500 x 1500 pixels

All images should be composed horizontally

Acceptable file types for submitted images are JPEG, PNG, TIFF, PSD

EXAMPLE IMAGERY



EXAMPLE IMAGERY

